



## Service Information

June 2019

### Haflinger Vehicle Numbers - Locations

#### III. Vehicle numbers “HAFLINGER”

The engine number is stamped to the left of the oil dip stick (fig. 7, arrow).

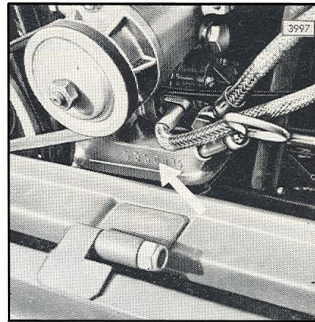


Fig. 7 ▲

The specification plate containing all vehicle numbers is fitted in front of the right hand front seat (fig. 8/1).

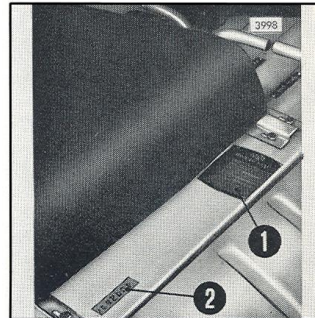


Fig. 8 ▲

Fig. 9 ▼

The chassis number is stamped on the right hand side of gearbox flange (fig. 9, arrow).

The chassis number is also stamped in front of the right hand front seat (fig. 8/2).

